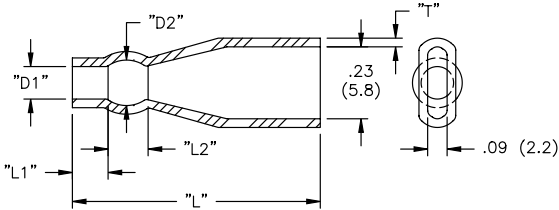


INSULATORS

235XXX Quick Fit Insulator



• UL #E120063

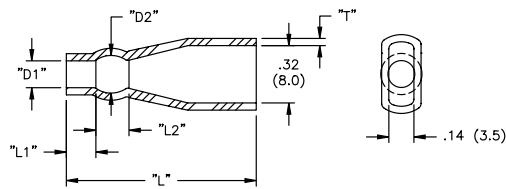


Material: Soft PVC, RMS-55 • Color: Transparent Blue								
Standard Pack: 1,000 per bag								
Part No.	Wire O.D. Range	Wire Ga.	"D1"	"D2"	"L1" ± .04 (1.0)	"L2"	"L" ± .04 (1.0)	"T"
235815	.042 - .060 (1.1-1.5)	26 - 22	.06 (1.5)	.12 (3.0)	.20 (5.1)	.12 (3.0)	.91 (23.1)	.03 (0.8)
235822	.058 - .080 (1.5-2.0)	24 - 20	.09 (2.3)	.15 (3.8)		.10 (2.5)		.04 (1.0)
235825	.058 - .091 (1.5-2.3)	22 - 18	.10 (2.5)	.14 (3.6)				
235830		20 - 18	.12 (3.0)	.16 (4.1)		.12 (3.0)	.03 (0.8)	
235835	.071 - .140 (1.8-3.6)	18 - 14	.14 (3.6)	.18 (4.6)				
235845	.100 - .140 (2.5-3.6)	16 - 14	.18 (4.6)	.22 (5.6)				

238XXX Quick Fit Insulator



• UL #E120063

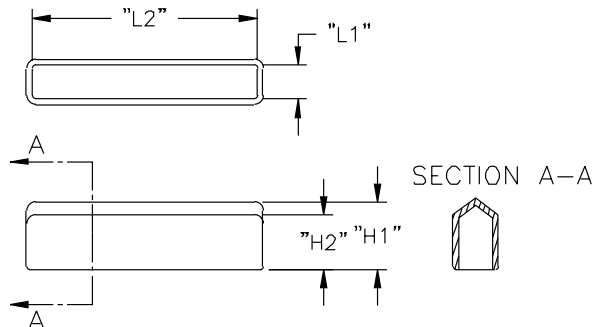
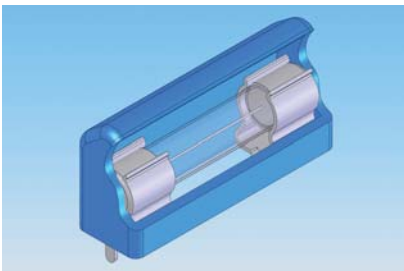


Material: Soft PVC, RMS-55 • Color: Transparent Blue								
Standard Pack: 1,000 per bag								
Part No.	Wire O.D. Range	Wire Ga.	"D1"	"D2" Ref.	"L1" ± .04 (1.0)	"L2" Ref.	"L" ± .04 (1.0)	"T" ± .008 (0.2)
238020	.058 - .080 (1.5-2.0)	24 - 20	.08 (2.0)	.13 (3.3)	.20 (5.1)	.12 (3.0)	.95 (24.1)	.04 (1.0)
238025	.058 - .091 (1.5-2.3)	22 - 18	.10 (2.5)	.18 (4.6)		.10 (2.5)		
238032	.071 - .126 (1.8-3.2)	18 - 16	.13 (3.3)	.19 (4.8)				
238035	.071 - .140 (1.8-3.6)	18 - 14	.14 (3.6)	.18 (4.6)		.12 (3.0)	.98 (24.9)	
238038		16 - 14	.15 (3.8)	.21 (5.3)		.10 (2.5)		
238040	.091 - .140 (2.3-3.6)	16 - 14	.16 (4.1)	.20 (5.1)		.12 (3.0)	.97 (24.6)	
238048	.113 - .190 (2.9-4.8)	14 - 12	.19 (4.8)	.25 (6.3)	.10 (2.5)	.98 (24.9)		
238060	.182 - .214 (4.6-5.4)	12 - 10	.24 (6.1)	.30 (7.6)	.28 (7.0)	.10 (2.5)	1.14 (29.0)	

840xxx Quick Fit Fuse Cover



• UL #E120063



Features

- Used to protect PCB-mounted fuse clips

Material: Flexible PVC, RMS-55 • Color: Transparent Blue					
Standard Pack: 1,000 per bag					
Part No.	"H1" Ref.	"H2" Ref.	"L1"	"L2"	Fuse Type
840620	1/2 (12.7)	0.391 (9.9)	.24 (6.1)	.79 (20.1)	METRIC
840730	1/2 (12.7)	0.391 (9.9)	.28 (7.1)	1.18 (30.0)	METRIC
840832	5/8 (15.9)	0.578 (14.7)	.32 (8.1)	1.26 (32.0)	METRIC
840836	1/2 (12.7)	0.391 (9.9)	.32 (8.1)	1.42 (36.1)	STD 0.25X1.25